

Oboe 2

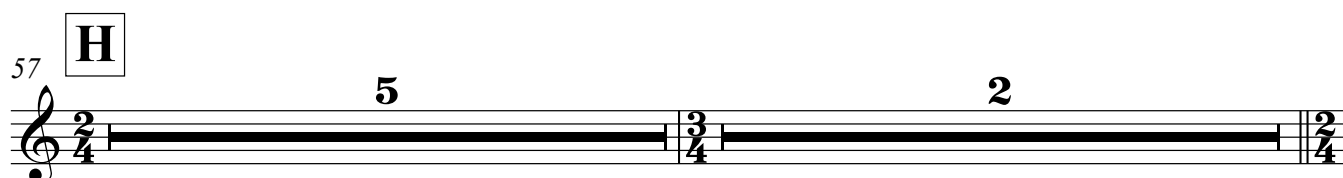
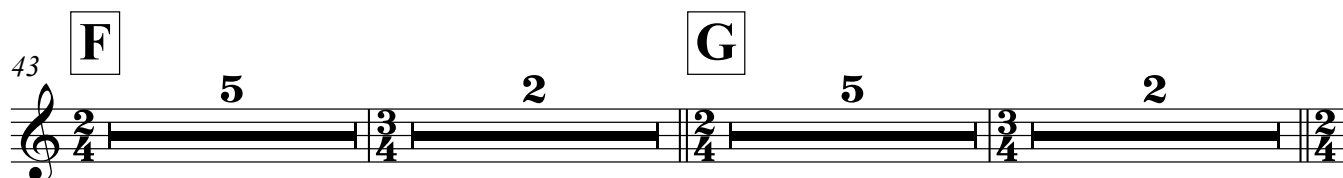
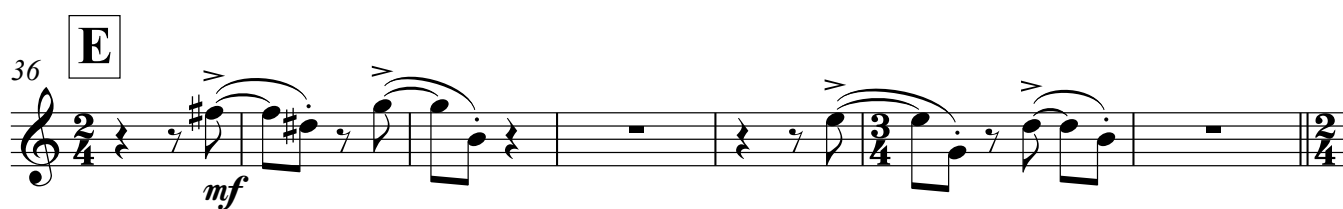
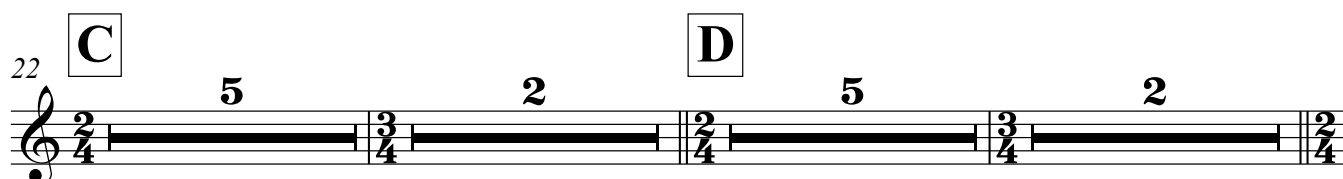
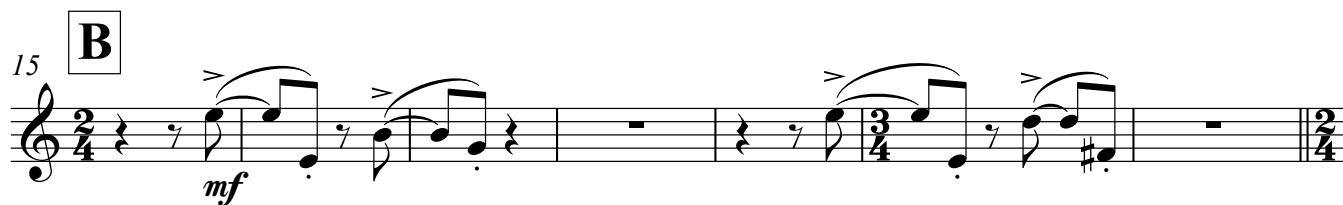
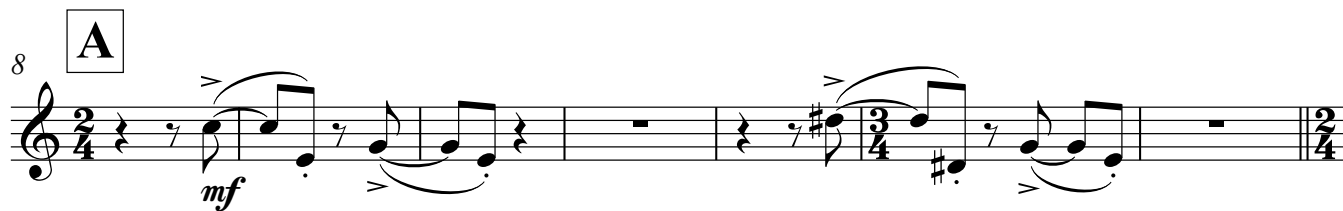
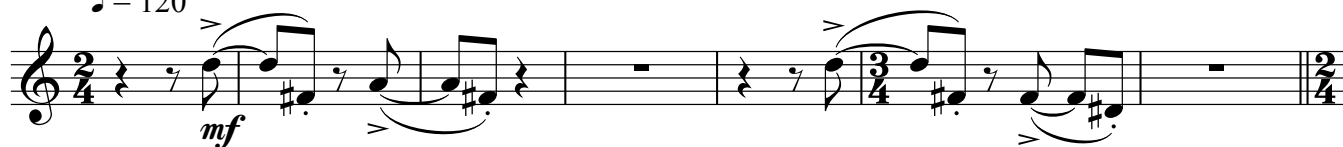
Foxtrot and Rumba

for chamber orchestra

Charlie Barber

1. Balloons and Saxophones - Foxtrot

$\text{♩} = 120$



Charlie Barber - Foxtrot and Rumba

Oboe 2

64 **I**

69 **J**

75 **K**

82 **L**

87 **M**

92 **N**

97 **O**

106

5 2

The musical score for Oboe 2 is composed of eight staves, each labeled with a letter from I to O. The music is written in treble clef and 2/4 time. The first staff (I) begins at measure 64 and ends at measure 68, featuring a triplet of eighth notes and a dynamic marking of *f*. The second staff (J) begins at measure 69 and ends at measure 74, featuring a triplet of eighth notes and a dynamic marking of *mp*. The third staff (K) begins at measure 75 and ends at measure 81, featuring a triplet of eighth notes and a dynamic marking of *mf*. The fourth staff (L) begins at measure 82 and ends at measure 86, featuring a triplet of eighth notes and a dynamic marking of *mf*. The fifth staff (M) begins at measure 87 and ends at measure 91, featuring a triplet of eighth notes and a dynamic marking of *mf*. The sixth staff (N) begins at measure 92 and ends at measure 96, featuring a triplet of eighth notes and a dynamic marking of *mf*. The seventh staff (O) begins at measure 97 and ends at measure 105, featuring a triplet of eighth notes and a dynamic marking of *mf*. The eighth staff (O) begins at measure 106 and ends at measure 110, featuring a triplet of eighth notes and a dynamic marking of *mf*. The score concludes with a double bar line and a final 2/4 time signature.

Charlie Barber - Foxtrot and Rumba

Oboe 2

3

Oboe 2

113 **P** *f* *mp* *p* **Q** **Rit.** 2

2. En noir et blanc - Rumba

128 **A** $\text{♩} = 132$ 2 **B** 2 4

136 **C** *mp* *mf*

140 **D** 12 **E** *f* *ff*

156 **F** 4 **G** *mp* *mf*

167 **H** 2 *ff*

172 **I** 12

Charlie Barber - Foxtrot and Rumba

Oboe 2

184 **J**

4 *ff* 2

192 **K**

6

198 **L**

mp *mf*

202 **M**

4

206 **N**

mf 3

212 **O**

6 *ff*